

SAX ALTO
QUE PASARÁ

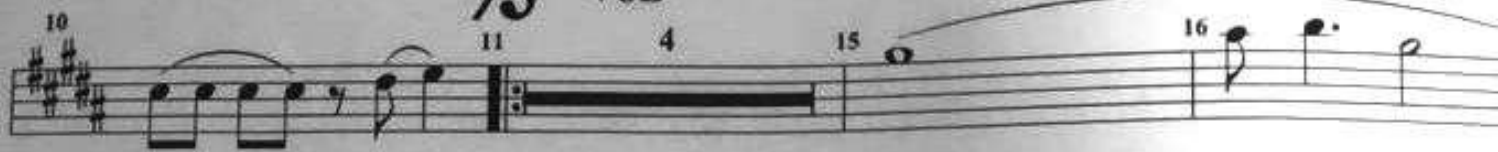
QUE PASARÁ

TRANSCRIP: DOMINGUITO
JESUS TE AMA



VOZ

2DA VEZ NO REPITE




STRIBILLO



SAX ALTO
QUE PASARÁ

38 39 40 **D.S. al Coda**

Musical staff for Sax Alto, measures 38-40. Measure 38 starts with a treble clef and a key signature of two sharps (F# and C#). The melody consists of eighth and quarter notes. Measure 39 continues the melody with a slur. Measure 40 ends with a quarter note and a Coda symbol (⌘).

 MAMBO #1 X3

42 43 44

Musical staff for Mambo #1, measures 42-44. Measure 42 starts with a treble clef and a key signature of two sharps. The melody features eighth notes with accents (^) and slurs. Measure 43 continues with similar notation. Measure 44 ends with a quarter rest and a repeat sign.

TPS

45 46 47 48 1.

Musical staff for TPS, measures 45-48. Measure 45 starts with a treble clef and a key signature of two sharps. The melody includes accents (^) and slurs. Measure 46 has a quarter rest. Measure 47 has a quarter rest. Measure 48 ends with a quarter note and a first ending bracket.

49 2. **Fine** 50 **AL STRIBILLO**  **Fine**

Musical staff for TPS, measures 49-50. Measure 49 starts with a treble clef and a key signature of two sharps. The melody includes a second ending bracket. Measure 50 ends with a quarter note and a Coda symbol. Below the staff, the text "AL STRIBILLO" is written with a Mambo symbol.